

NEWSLETTER FEBRUARY 2024

CHM
GLOBAL

Qatar | Bahrain | Oman | UAE | India | UK
www.chm-global.com



CHM Global LLC

Office No. 6, Ground Floor, Building No. 1, Financial Square, C-Ring Road, Doha, Qatar
24x7: +974-50112300 | Tel: +974-4417 9000 | Fax: +974-4481 2429
Email: info@chm-global.com | Website: www.chm-global.com



Qatar National Sports Day

Qatar National Sports Day is an annual public holiday celebrated on Feb 13 in the State of Qatar to promote and encourage a healthy and active lifestyle among its citizens and residents.



Exclusive Presentation on Marine & Offshore Solutions in Doha!

CHM Global and Global Maritime Consultants Group (GMCG) jointly invite you to explore our marine and offshore solutions on Tuesday, 27th February 2024, at 16:00, at the Sheraton in Doha. Our collaboration showcases expertise tailored for Qatar's marine industry, covering surveys, offshore operations, ship management, consultancy, work boats, and shipping agency services. With a commitment to being the go-to solution provider, CHM Global offers comprehensive support across the maritime spectrum, addressing the diverse needs of our clients from vessel management to onshore logistics. Join us for insights into how our integrated approach can benefit your organization's marine endeavors.



The Doha International Maritime Defence Exhibition & Conference DIMDEX 2024

DIMDEX 2024, held under the esteemed patronage of His Highness Sheikh Tamim Bin Hamad Al Thani, the Amir of the State of Qatar, is a premier event proudly hosted and organized by the Qatar Armed Forces. Renowned as one of the foremost gatherings on the global Defense and security industry calendar, the Doha International Maritime Defence Exhibition & Conference (DIMDEX) stands as a symbol of excellence.

Scheduled to take place from the 4th to the 6th of March 2024, the eighth edition of DIMDEX promises to be a landmark occasion. As a flagship event in the international maritime Defense and security arena, DIMDEX continues its legacy of uniting key decision-makers from across the world. Over three days, participants will engage in meaningful commercial exchanges, explore a multitude of cutting-edge military technological advancements, and actively participate in expert panel discussions.

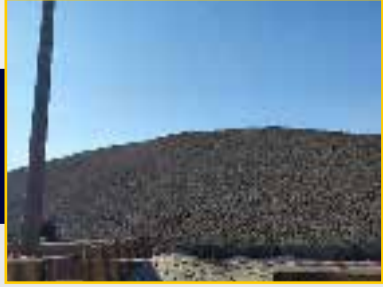
DIMDEX 2024 serves as a crucial platform where leaders and professionals in the maritime Defense and security sector convene. The event facilitates collaboration, knowledge-sharing, and networking opportunities, fostering innovation and progress within the global defense community. As an essential fixture on the industry calendar, DIMDEX contributes significantly to shaping the future of maritime Defense and security worldwide.

Surveys, Inspections and Projects Done In The Month Of February



Hull thickness Inspection of Barge

Hull thickness inspection of a barge is a crucial aspect of maritime maintenance and safety. It involves the assessment of the thickness of the steel or other materials that make up the barge's hull. This inspection is essential to ensure the structural integrity of the barge and to identify any potential weaknesses or corrosion that may compromise its seaworthiness.



DRI

CHM Global have Qualified surveyors trained to oversee and manage the entire loading process of DRI. Their expertise ensures that the loading is conducted in compliance with industry standards and safety regulations, preventing issues. If referring to these activities being done during the loading of Direct Reduced Iron (DRI), it suggests a comprehensive quality control and safety approach. CHM Global's are also engaged in activities including Thermocoupling, Hatch Testing and Hold Inspection.

CHM Global's are also engaged in activities including Thermocoupling, Hatch Testing and Hold Inspection.



Towage

Towage refers to the activity of towing or pulling a vessel, typically a ship or a barge, by another vessel known as a tugboat or tug. This maritime operation is essential for various reasons, including maneuvering vessels in harbors, assisting with berthing and unberthing, and aiding ships through narrow channels or challenging navigational conditions. CHM Global has successfully executed two towage operations as per client's requirements from Al Ruwais, Qatar to Steven Rock, UAE and from Ras Laffan anchorage to Mesaieed Port.



Gas Free

Gas-free inspection is a crucial safety procedure conducted in various industries, including maritime, petrochemical, and manufacturing, to ensure that confined spaces are free from hazardous gases before personnel entry. This inspection is essential to prevent accidents, protect workers, and maintain a safe working environment. CHM Global is equipped with qualified inspectors capable of conducting thorough and reliable gas-free assessments.

CHM Global is equipped with qualified inspectors capable of conducting thorough and reliable gas-free assessments.



QIC Survey (electronic survey)

We have been assigned by QIC to conduct an inspection of the consignment and comment on the nature, extent, and cause of damage at Computer Arabia warehouse, Industrial area, Qatar. The scope of CHM Global's involvement encompassed the

inspection of alleged damage to electronic hardware, which was reportedly shipped as air cargo from Ireland to Doha, Qatar. Our team conducted a comprehensive examination to assess the extent of any damage incurred during transportation, ensuring a thorough evaluation of the electronic hardware's condition upon arrival. This inspection aimed to provide accurate insights into the shipment's integrity, supporting the resolution of any potential claims or concerns related to the reported damage during the shipping process.



Cargo Damage Inspection

Cargo damage inspection is a crucial process carried out to assess and document any harm or deterioration to goods during transportation, handling, or storage. The consignment, comprised of 53 containers, warranted a thorough examination to determine

the nature, cause, and extent of the purported damage. Our team conducted an inspection of the allegedly affected Wheat Bran consignment, contained in bags, at the warehouse located in the Industrial Area, Qatar.



Measurement Survey

A measurement survey of consignments, particularly large and complex equipment like a tunnel boring machine (TBM), involves a detailed and precise assessment of its dimensions and specifications. This survey is crucial for logistical planning,

transportation, and ensuring compatibility with the intended construction site.



Offhire bunker Survey

An off-hire bunker survey is a maritime inspection carried out to assess and determine the quantity of bunker fuel remaining on a vessel at the time it is being redelivered to the owner or charterer. Bunker fuel refers to the fuel used to power a ship, and its

consumption is a significant operational cost for maritime companies.



UHT

Ultrasonic hatch testing is a method used in the maritime industry to assess the watertight integrity of hatch covers on ships. Watertight hatches are crucial for maintaining the safety and integrity of a vessel, especially during adverse weather conditions or in the

event of accidents. Ultrasonic testing is a non-destructive technique that helps identify potential leaks or weaknesses in the hatch cover structure.



Flight Engine Import & Export Inspection (Discharge Monitoring)

Inspection of the discharge of a flight engine involves a thorough examination of the engine's components and systems during maintenance or replacement. This meticulous process is critical for

ensuring the safety, reliability, and performance of aircraft engines. It includes detailed assessments of various elements, such as the engine's structural integrity, fuel and hydraulic systems, electronic components, and overall functionality.



Crane Inspection

Crane inspection is a crucial process involving the systematic examination and assessment of cranes to ensure their safety, reliability, and compliance with industry standards. This inspection encompasses various components, including the structural

integrity, mechanical systems, electrical components, and safety features of the crane. Regular inspections are essential to identify and address any issues, wear and tear, or potential hazards that may affect the crane's performance.



PPI and Condition Survey of Barge

Both the pre-purchase inspection and condition survey play crucial roles in ensuring the seaworthiness, reliability, and compliance of the barge with industry standards. These assessments are instrumental for buyers, sellers, and maritime professionals to make

well-informed decisions and maintain the overall safety and operational efficiency of the barge



SOF

A Statement of Fact (SOF) for pipe discharging from a vessel is a formal document that records key details and conditions related to the process of discharging cargo or substances from a ship. This statement serves as an official record and is crucial in maritime

and logistics operations, providing a comprehensive account of the discharge procedure.



Load Monitoring of SS Pipes

Monitoring the load discharging from a vessel to a jetty, particularly when involving stainless steel pipes, is a crucial aspect of maritime and industrial operations. This process ensures the safe and efficient transfer of various materials from the vessel to

onshore facilities. Key points regarding the monitoring of load discharging of stainless pipes are safety compliance, optimizing discharge rates, communication and coordination.



Lashing survey for military vehicle

A lashing survey of military vehicles is a specialized inspection conducted to ensure the proper securing and restraint of military vehicles during maritime transportation. Military vehicles are often transported by sea as part of strategic deployments or

logistical operations. The lashing survey is essential to confirm that the vehicles are securely fastened to the vessel, preventing any movement or damage during transit.

New Joinees



Name
Vishalkumar Bhupendrabhai Shah

Designation
Manager, Projects

Department
Head Office



Name
Abhimanyu Marwaha

Designation
Manager – Business Development

Department
MD Office

Birthdays



07 Feb Kannanunni Ramakrishnan



21 Feb Tampan Andika



22 Feb Mohammed Mufarrij Samsudeen



28 Feb Harison thomas



20
24